

Mounting Holes

TOP ▲

**EVOAQ**

## THROUGH-WALL FAN CASE MOUNTING TEMPLATE

### FAN MOUNTING INSTRUCTIONS:

Tape template to internal wall where fan is to be mounted. Make sure the template is flat and level. Take care to avoid timber studs and wiring inside the wall. Cut out along the dashed line (Ø185mm) and drill out all 4 mounting holes. Remove template from wall.

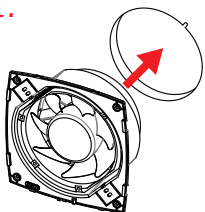
Cut a Ø152 - 157mm hole into the external wall centred and in line with the hole in the internal wall.

Connect the fan power cable. Place fan into hole in internal wall. Mount fan with 4 mounting screws. Clip grille into place (line up bottom edge first) and secure grille with provided screw.

Connect ducting and external cowl or grille from outside as required.

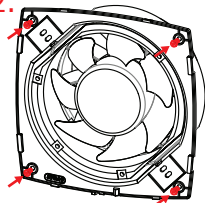
Power Cable Entry

1.



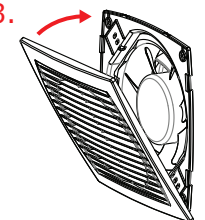
Cut hole for fan in wall

2.



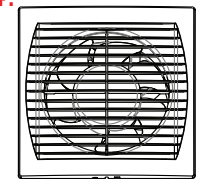
Mount fan with 4 screws

3.



Clip grille into place

4.



Secure grille with screw