



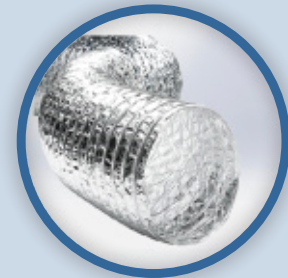
Extraction Vent

Place extraction vent within 1-2 metres from the shower or bath

The vent should not be placed directly above the shower unless absolutely necessary

Recommended Holesaw size

- 152mm (150mm vent)
- 127mm (125mm vent)



Ducting

Avoid any sharp bends or corners when placing ducting - choose the shortest route

Use plenty of tape to secure ducting onto fan, extraction vent and outlet grille

Recommended Ducting Length

- Up to 1m between vent and fan (max 1.5m)
- Up to 5m between fan and outlet grille



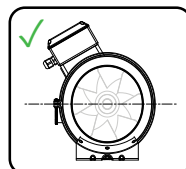
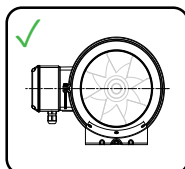
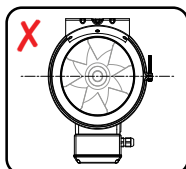
EVOAQ Extraction Fan

Use chain to suspend fan from rafters (150mm fan only)

Plug fan into power point using the power cord provided

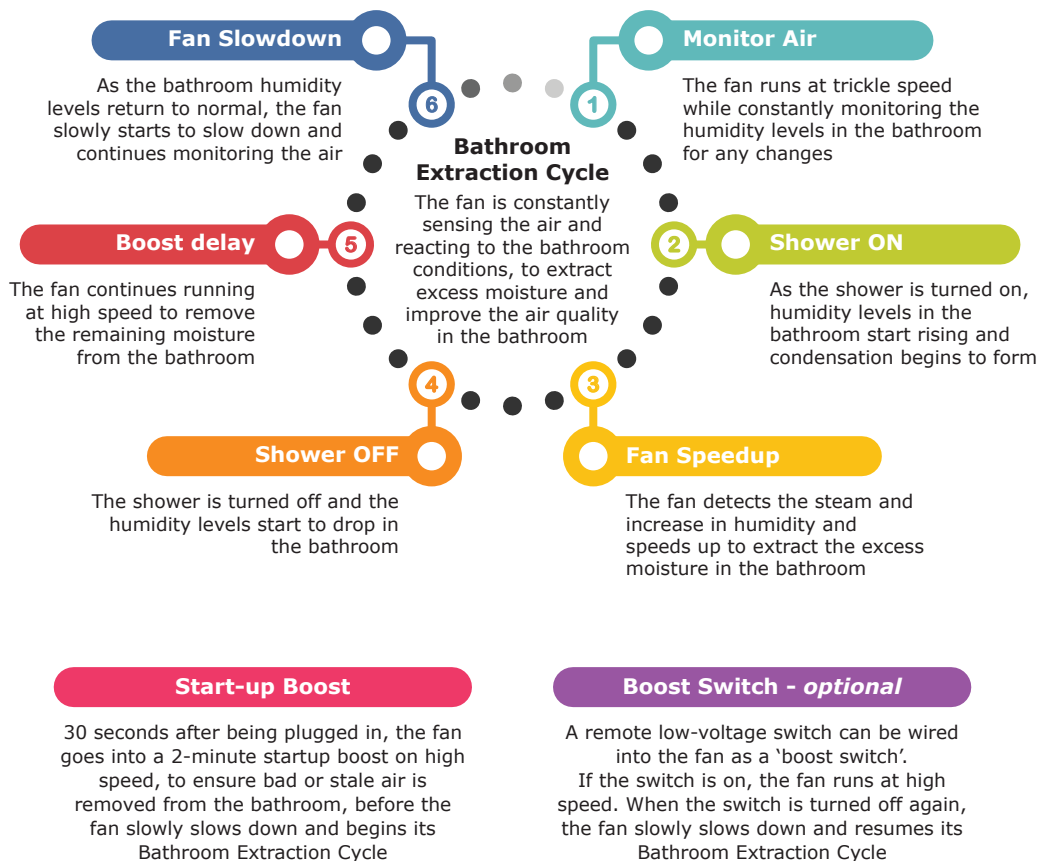
If no powerpoint is available, one should be installed by a registered electrician

Do not install the fan upside down as this will damage the fan



Automatic EVOAQ Bathroom Extraction Fan

Something about how the fan works in an automatic way with built-in sensor, always on and ready to start extracting



EVOAQ
Intelligent Technology

**Fully Automatic
Bathroom Extraction.
Just Plug and Play.**



For more information, visit www.evoaq.co.nz