

Fan Installation Manual

Please take the time to read these instructions in full before commencing your installation.

Careful planning prior to starting work will guarantee the fastest and best results regarding the installation.



Working in the ceiling space can be a hazard, and all safety precautions should be used to ensure the safety of yourself and any others.



Adjustable Speed Extraction	Fan Model EX-TW150MC	Software Version V1.1	Manual Version V3.1.0 09-2023
--	--------------------------------	---------------------------------	---

Installation Manual

150mm EC Through-Wall/Ceiling Fan for Manual Extraction (Adjustable Speed)

Thank you for your purchase of our company's product. It has been manufactured following current technical safety regulations and is in compliance with AS/NZ60335 standard.

Please read this instruction booklet carefully before installing or starting up the product.

It contains important information on personal and user safety measures to be followed while installing, using, and carrying out maintenance work on the equipment. Once the product has been installed, please hand this booklet to the end user.

Before installing the fan, it is important to understand the way this fan functions.

The fan is designed to be continuously powered.

When the fan is first turned on, it will ramp up to full speed. To adjust the fan speed, insert the tool provided with the fan through the small hole in the center of the fan cone and press the button. For every short press, the fan will slow down by 10%. Allow 3 seconds for the fan to adjust its speed. Repeat until the fan reaches the desired speed.

After the 11th button press, or if the button is pressed down for more than 3 seconds, the fan will return to full speed. Any subsequent button presses will decrease the speed accordingly.

The next time the fan is turned on it will ramp up to the selected speed and stay there unless the button is pressed again and the speed setting changed again.

This model fan does not include the option of adding a remote wall switch.

INSTALLATION OVERVIEW

Before commencing installation, select a suitable place for the fan to be installed in the external wall. Locate and avoid wall studs when determining fan placement. The fan must not be placed inside zone 1 (see image 2) as the fan is powered by mains voltage and could pose an electrocution hazard.

Drill a 152mm hole through the wall for the fan, either using a circular hole saw or other means. Cut slots to fit the fan wiring through the wall. Wire the fan power lead and switch cable as per the wiring diagram (see image 1).

Place the fan inside the hole and remove its face plate by undoing the screw on the bottom edge of the fan. Mount the fan by placing the screws provided in the screw holes in the fan and fastening them to the wall - make sure the fan is level and spins freely as you do this.

Once the fan is mounted, replace the face plate and screw in place, making sure the grille is positioned correctly and no wires are cinched beneath the grille or face plate.

Note: wiring mains power should only be carried out by a registered electrician.

Once the fan is in installed, place a short length of 150mm aluminium ducting over the fan spigot from outside, then install a cowl or louvre grille on the other side as required.

Please note: Excessive ducting and sharp bends lower the fan's performance. If installing as a through-ceiling fan ensure the ducting is long enough, with gradual bends, before

cutting the ducting.

Important information for the safety of installers and user:

Installation must only be carried out by qualified persons. Make sure that the installation complies with the applicable building and electrical regulations.

This appliance is not intended for use by young children or infirm persons unless they have been adequately supervised by a responsible person to ensure that they can use the appliance safely. Young children should be supervised to ensure that they do not play with the appliance.

This apparatus must not be used in explosive or corrosive atmospheres. If a fan is going to be installed to extract air from premises where a boiler or other combustion apparatus are installed, make sure that the building has sufficient air intakes to assure adequate combustion. The extractor outlet must not be connected to a duct used to exhaust smoke or fumes from any appliance that uses gas or any other type of fuel.

TRANSPORT AND MANIPULATION

The packaging used for this apparatus has been designed to support normal transporting conditions. The apparatus must always be transported in its original packaging as not doing so could deform or damage the product. Do not place heavy weights on the packed product and avoid knocking or dropping it.

The product should be stored in a dry place in its original packaging, protected from dust and dirt until it is installed in its final location. Do not accept delivery if the apparatus is not in its original packaging or shows clear signs of having been manipulated in any way.

Check that the apparatus is in perfect condition while unpacking. *Any fault or damage caused in origin is covered by our company guarantee.* Please make sure that the apparatus coincides with the product you have ordered and that the details on the rating label fulfil your requirements.

ELECTRICAL CONNECTION

The extractor fan must be connected to a single-phase mains network, with the specific voltage and frequency according to the specifications on the fan rating label and in accordance with New Zealand electrical standards.

Please note that this model of fan is not fitted with a power plug and must therefore be wired with a fixed permanent connection.

In case of damage to the power plug, cord, or device itself, switch off the device and do not tamper with it. Damaged product must only be repaired or replaced exclusively by the manufacturer or by an appointed representative. Failure to comply with the above may endanger the safety of people and cause possible damage to the whole system.

SAFETY DURING INSTALLATION

Make sure there are no loose elements near the fan, as they could run the risk of being sucked up by it. If it is going to be installed in a duct, check that it is clear of any element that could be sucked up by the fan. When installing an apparatus, make sure that all the fittings are in place and that the structure which supports it is resistant enough to bear its weight at full functioning power.

Before installing the fan, make sure the mains supply is disconnected, even if the fan is switched off.

If the fan is installed in a duct, the duct must be used for the extraction system only.

STARTING UP THE FAN

Fans may have delayed startup, or may operate under the control of the inbuilt controlling electronics included with the fan. Always take extreme care as the fan may start unexpectedly. Always disconnect the fan from power during maintenance.

Before starting up the fan, ensure that:

- The fan is well secured and the electrical connections have been carried out correctly;
- Any electrical safety devices are correctly connected, adequately adjusted and ready for use;
- The wire and electrical connection inputs are correctly sealed and water-tight;
- If the fan has been mounted in a duct, the duct is clear of any loose material that could be sucked up by the fan.

When starting up the fan, ensure that:

- The propeller turns in the correct direction;
- There are no abnormal vibrations.

If the circuit protection device is tripping during operation, the apparatus must be quickly disconnected from the mains supply. The whole installation should be carefully checked before trying to start up the machine again.

MAINTENANCE AND REPAIR

Before servicing the fan, make sure it is disconnected from the mains supply - *even if it has previously been switched off*. Avoid the risk of anyone else plugging it in while you're working on it.

The fan must be regularly inspected. These inspections should consider the fan's working conditions, ensuring no dirt or dust builds up on the propeller, turbine, motor or grilles. This could be dangerous and perceptibly shorten the fan's lifespan. While cleaning, take extra care not to damage the propeller.

All maintenance work should be carried out in strict compliance with New Zealand safety regulations.

All our products contain repairable or replaceable parts. Repair or replacement of these parts should only be handled by the manufacturer. In the case of damage or malfunction of the fan, please contact the manufacturer or installer to arrange for repair. Please note that a small fee may apply for repair services not covered under warranty.

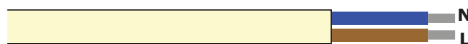
FAN WIRING (IMG 1)

This fan includes a single power lead. Please refer to the images below to ensure the fan is wired correctly to prevent damaging the fan.

Power lead - fan must be wired with fixed permanent connection:

Blue = Neutral

Brown = Phase (Live)

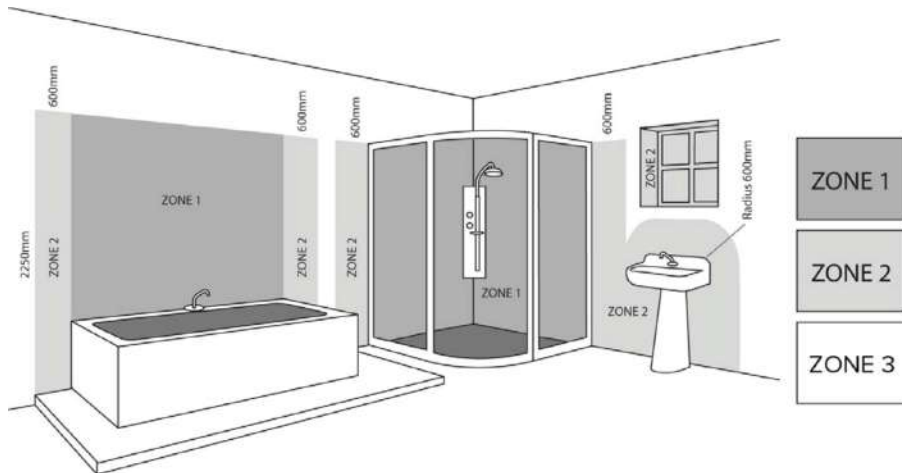


Yellow/Green = Earth -> *This product is double-insulated and not earthed, earth wire does not need to be connected*

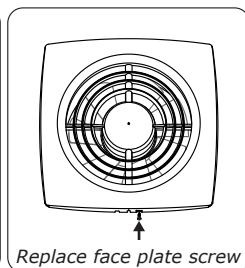
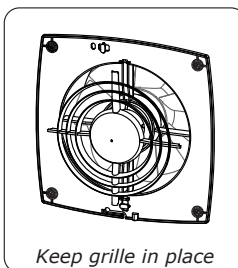
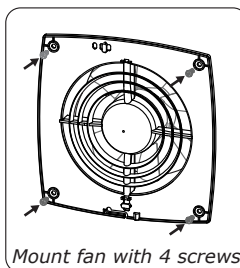
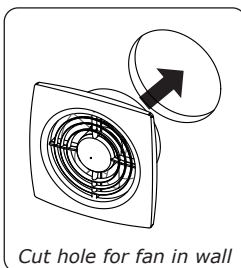
Please note that this fan does not include wiring for an external switch input.

BATHROOM ZONES (IMG 2)

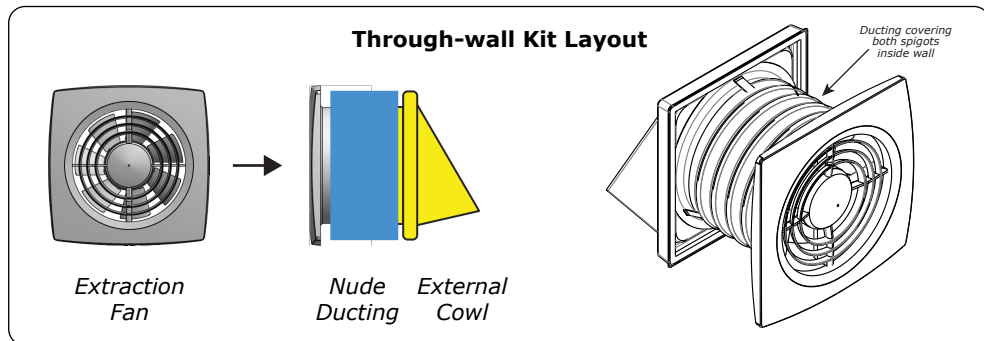
This through-wall fan model is suitable to be placed inside zone 2 and zone 3 only. **DO NOT install the fan inside zone 1 (image below).** Only low voltage equipment may be installed in zone 1. This means avoiding wet areas - directly above the shower or bath (up to 2250mm above floor level) and 150mm around the shower cubicle.



FAN INSTALLATION (IMG 3-6)

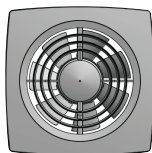


THRU-WALL KIT INSTALLATION (IMG 7-9)



THRU-CEILING KIT INSTALLATION (IMG 10)

Through-ceiling Kit Layout



Extraction
Fan



Flexi
Ducting



Grille or
Cowl

CENTRAL BUTTON FUNCTIONALITY

applies to software version 1.1 and later

This fan has 11 selectable speed settings in total. Use the tool included with the fan to press the button, located behind the central nose cone, and select the desired speed.

Tip: If you can't find the tool, a paper clip or drawing pin works too!

Short Press: 0.5 - 3 seconds

Press and release the button quickly.

The fan slows down by 10% and saves the new speed setting.

If the fan is already running at its lowest speed, it returns to 100% speed instead.

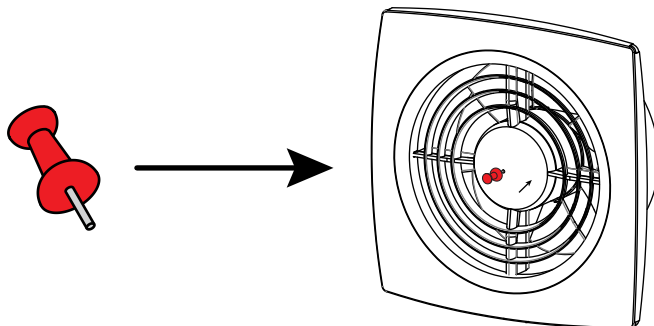
As the change is not instant, please allow ~3 seconds for the fan speed to adjust before pressing the button again.

Long Press: > 3 seconds

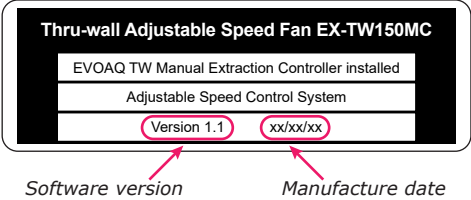
Press and hold the button until it starts to ramp up.

The fan ramps back up from the current speed to full speed and saves the new speed setting.

As the change is not instant, please allow up to 15 seconds for the fan speed to adjust before pressing the button again.



To check which software version is installed and when your fan was manufactured, check the label on the fan - located either underneath the face plate or on the back of the fan (older models)



EX-TW150MC Thru-Wall Fan Specifications	
Fan Part Number	EX-TW150MC
Fan Spigot Size	150mm
Voltage (V/Hz)	230 / 50
Power (W)	2.5 - 17
Air Flow (L/s)	11 ~ 95
Static Pressure (Pa)	132
Noise Level (dB)	31
Speed (RPM)	500 ~ 2800
Specific Fan Power (SFP)	0.180 W/Ls ⁻¹

For all our manuals, fan specifications, system details and more information visit www.evoaq.co.nz/downloads



For further information, please contact EvolutionFX NZ Limited
email: info@evolutionfx.co.nz
phone: +64 9 558 5590